

EPA-FEMA Training on Scenario Planning & Smart Growth

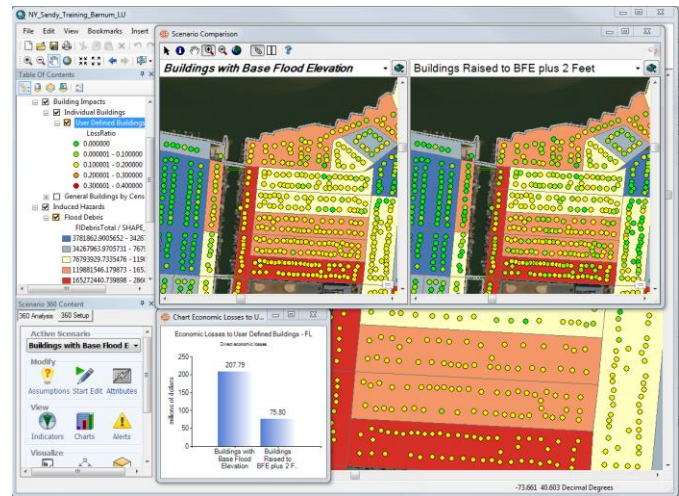
Superstorm Sandy Recovery on Long Island

General Location: Long Island, New York

Partners: EPA, FEMA, Suffolk Cty. Economic Development and Planning, Nassau Cty. Public Works, NY State Dept. of State, Metropolitan Transportation Authority, CH2M Hill, PlaceMatters, Placeways

The U.S. Environmental Protection Agency (EPA) and the Federal Emergency Management Agency (FEMA) collaborated to sponsor and host this week-long training and capacity-building workshop. The goal was to help local and regional smart growth leaders learn to use scenario planning tools and techniques to improve communities' resilience in the face of natural hazards while also improving quality of life, creating long-term economic prosperity, and protecting the environment.

A key feature of the workshop was hands-on training in Placeways' award-winning *CommunityViz*® scenario planning software, featuring exercises built around Hurricane Sandy's effects on Long Island. The seminar also covered other scenario planning tools and techniques, engagement and communication tools and techniques, example projects, and group discussions.



Part of the training covered how *CommunityViz* can exchange data with FEMA's hazard planning tool, *Hazus*. *Hazus* provides detailed assessments on the economic and infrastructure damage caused by natural hazard events like Sandy. *CommunityViz*, using its built-in *Hazus* Risk Assessment tools, can pull in results from a *Hazus* analysis and provide additional visualization and analysis. In addition, *CommunityViz*-created scenarios can be exported back to *Hazus* for detailed assessment. At the training Placeways provided relevant examples of this and other *CommunityViz* capabilities as they apply to resiliency and smart growth on Long Island.

The training also explored bringing in data from *EJ Screen*, EPA's environmental justice online tool. Students were provided a database for Long Island with EJ results by Census block, and EPA provided a short demo of the tool. By adding another layer of information to their *CommunityViz* analysis, participants were able to explore hazards from an EJ perspective in addition to the economic and other dimensions provided by *Hazus* and *CommunityViz*.

The workshop was highly successful and the goal is to spread its outcomes to other regions across the country.



Dates: March, 2015

Contact: Jonathan Halfon, Community Planning and Capacity Building, FEMA NYSRO. Jonathan.Halfon@fema.dhs.gov